



03

A2LA

04

---

05

1

---

09

## A2LA

88%+ \* + 58@5 : 77  
88%+ ' & 58@5 BJ@5D : 77  
88S) 58@5 58@5





/



ž



; 6 % (\$%)

; 6 % (\$%)



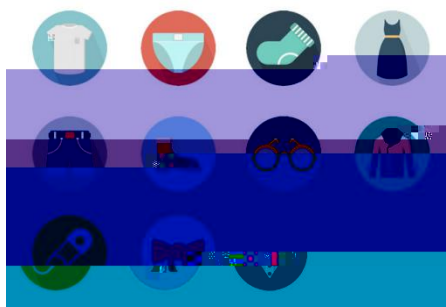
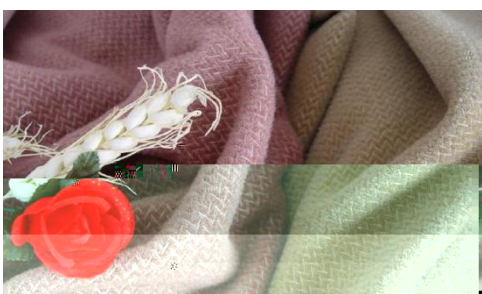
		+ 2 A	3 <sup>+</sup> A	6 <sup>+</sup> A	6 + 12 12 B	+ 12 B
	1.		/			
	2.	/	/	/	/	
	3.					
	4.					
	5. / /		30%	30% 100%	0	/
	6. /		30%			
	7.		/			/
	8.pH					
	1.		/			
	2. / /	/	30%	30% 100%	0	
	3. /		30%			/
			/			

%

\$\$\$

&

# # # # # # # # # # # # # # # #





50%

						pH

1. id
2. CNAS CMA

%

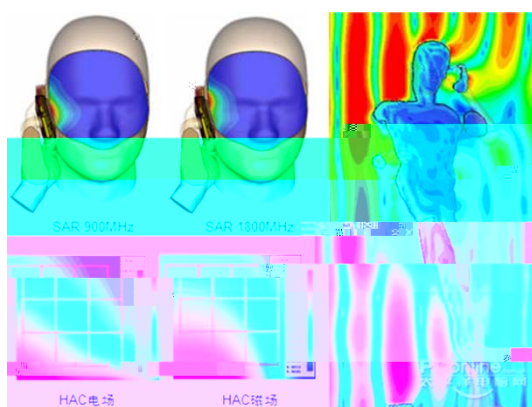
&

		GB 18401				
/ / / / /						
/ / / /						
/ / / /						
/						
/ /						
/		GB 31701				
/						
/						
/						



	² Ó m O	-( ¶ i	ö œ ö °	Ù € Å O	J n > * J ä	¿ U
î x † R ≠ . > î Æ • x 1 / l x Y Ý ÿ		½		½		½
• x 0,3 • © Æ x		½		½		½
D Æ ' , Ä l		½		½		½
S Ã Y ±		½		½		½
ô î Å k Å È p ÿ ô g _ _ R \ b μ % C ¿			½			½
ê P ¿ Æ x		½		½	m P ¿ O o • - P ¿ O o • _ • R	
l ;	f s ) Ñ † g N ¶ h o • ¶ k w g N ¶ h o • G ä b m O o • U ä † T 7 Ú R § i % o o • ö œ ö ° o • Ù € Å O o • Ö Å R					

B' £# ; O ü ü + e v ? ± " r Ä - Lu 1 ÷ Ä



986

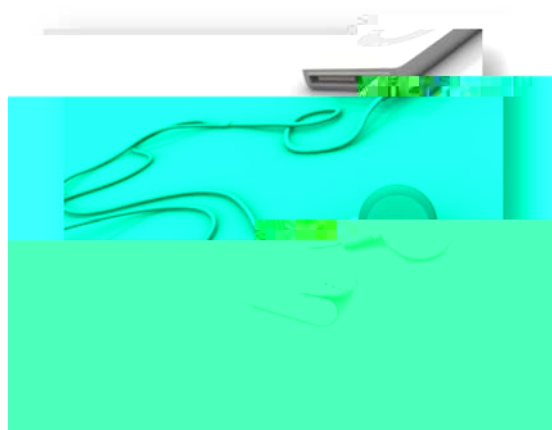
%

&

' "

' SVA

%SS



("

)"

\*"

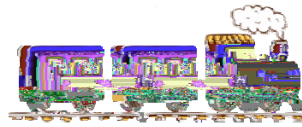
+"

's

,"

\_"

%&"



2017

) &

&Sa[# \_[

&

) (

f&S- #(. #97L

'

&S

) %

&S- #(. #97

F957<

%

&S%

(

( 'S

!

#

9HG=

fi&L	fi&L	6UbX %) % \$!) & \$ A<n	6UbX &) & \$!)') \$ A<n	6UbX' .) (+\$!) +& A<n
5i ghf]U	5H			
6Y []i a	69			
6i `[f]U	6&			
7fcUh]U	<F			
7ndfi g	7M			
7nYWfYdi V ]W	GN			
8YbaUf_	8?			
9ghcb]U	99			
: ]b` UbX	: =			
: fUbW	: F			
; YfaUbm	89			
; fYYW	9@			
<i b[ Ufm	<I	) & \$!) & \$ A<n		
=fY UbX	=9			
=hU m	=H			
@hj ]U	@			
@hNi Ub]U	@H			
@lYaVci f[	@			
AU hU	AH			)) +\$!) +& A<n
BYh\Yf` UbXg	B@			
Dc` UbX	D@			
Defhi [U	DH			

# RoHS 2017 6 1

85%+ \* %

	S' S%
	S' %
	S' %
	S' %
	S' %
	S' %



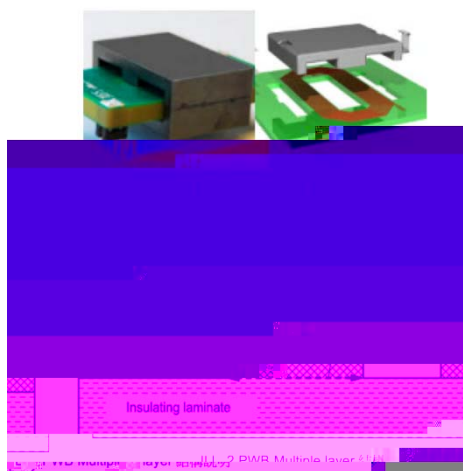
IEC/UL/EN 62368 1

PCB



=97#I @#OB \* & \*, !%  
 HfUbgZcfaYfg L  
 =97#I @#OB \* & \*, !%  
 6Ug] Wg dd` YaYbhUf m=bgj `Uh] cb fl6=#G=L  
 =@@` & DK6 Ai `h] d` Y `Uhyf

DckYf gi dd` m/ 87 hc 87 7cbj Yf hYf =H5J  
 D76 fl =@@` %D UbUf  
 fID UbUf HfUbgZcfaYfg L FY] bZcf WX =bgj `Uh] cb flF=L  
 D76



h\YfaU Ww]b[ hYgh f) ("") fMzL  
 F= S'(aa / F= S'(aa HLv Y; "%

U D76  
 V H\YfaU 7mW]b[ Hgh  
 W  
 X . ' S! ()  
 f) ("") fMzL  
 DK6 h\YfaU Ww]b[ hYgh Dc` `i h] cb 8Y[fYY &  
 fY] bZcf WX ]bgj `Uh] cb D76

62368 1 CB

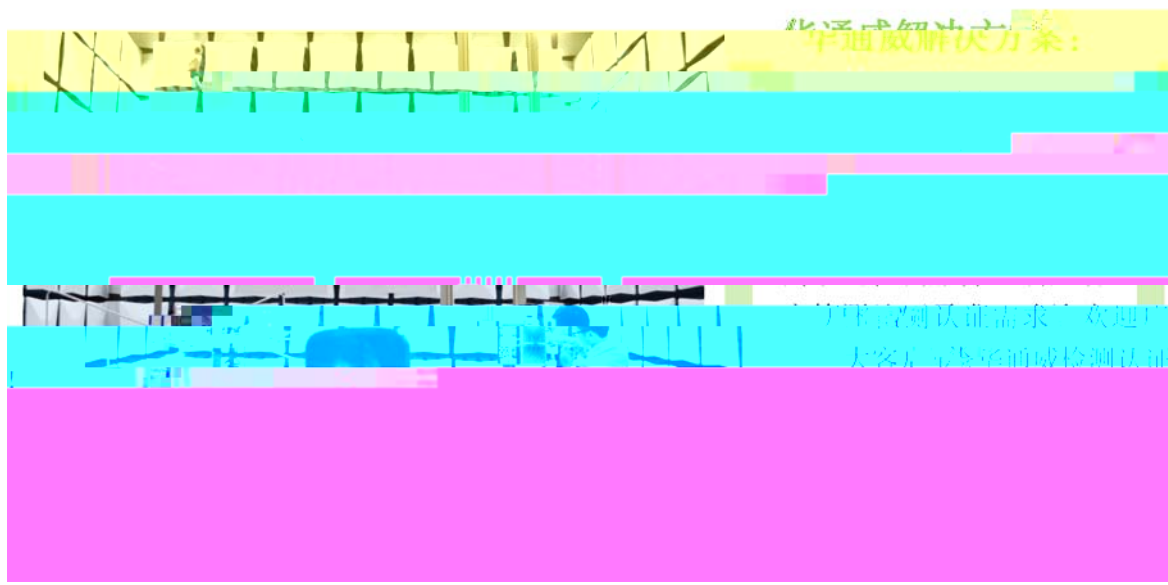
IEC/UL/EN 62368 1 CB

# EN 55022

# EN 55032



ACMA EMC OJEU EN  
EN )) S & EN )) S & EN )) S & EN )) S & EMC  
EN )) S & EN )) S & EMC EN, IEC,  
CISPR ACMA EMC  
OJEU



#

!!

9HG=

C>

CE

Standard	ETSI Version	OJ( )	Check date	Remark
EN 300 328	2.1.1(2016 11)	2017/1/13	2017/6/18	
EN 300 440	2.1.1(2017 03) Published		2017/6/18	
EN 300 330	2.1.1(2017 02)	2017/3/10	2017/6/18	
EN 300 220 1	3.1.1(2017 02) Published		2017/6/18	essential requirements
EN 300 220 2	3.1.1(2017 02)	2017/3/10	2017/6/18	essential requirements
EN 300 220 3 1	2.1.1(2016 12)	2017/3/10	2017/6/18	social alarms(869.200 869.250 MHz)
EN 300 220 3 2	1.1.1(2017 02)	2017/3/10	2017/6/18	Wireless alarms(868.60 868.70 MHz)(869.25 869.40 MHz)(869.65 869.70 MHz)
EN 300 220 4	1.1.1(2017 02)	2017/3/10	2017/6/18	Metering devices(169.400 169.475 MHz)
EN 301 357	2.1.1(2017 06) Published		2017/6/18	Cordless audio devices(25 2000 MHz)
EN 301 489 1	2.2.0(2017 03) Draft		2017/6/18	
EN 301 489 3	2.1.1(2017 03) Final Draft		2017/6/18	
EN 301 489 17	3.2.0(2017 03) Draft		2017/6/18	

注：

绿色部分是欧盟公布采用正式的协调标准。