

7月刊 · 2016年

NO **55**

▲ 全球认证 本地化服务 Local Service For Global Certification ▼



华通威荣获深圳市社会责任评价一星级企业 | 03

华通威的ESG管理到了吗? | 05

华通威六大岗位火热招聘 | 28

CNAS

A2LA

AQSIQ

IEC CB

CCIC

" "

9 1

EMC

3 1

20

89

2015 4 15

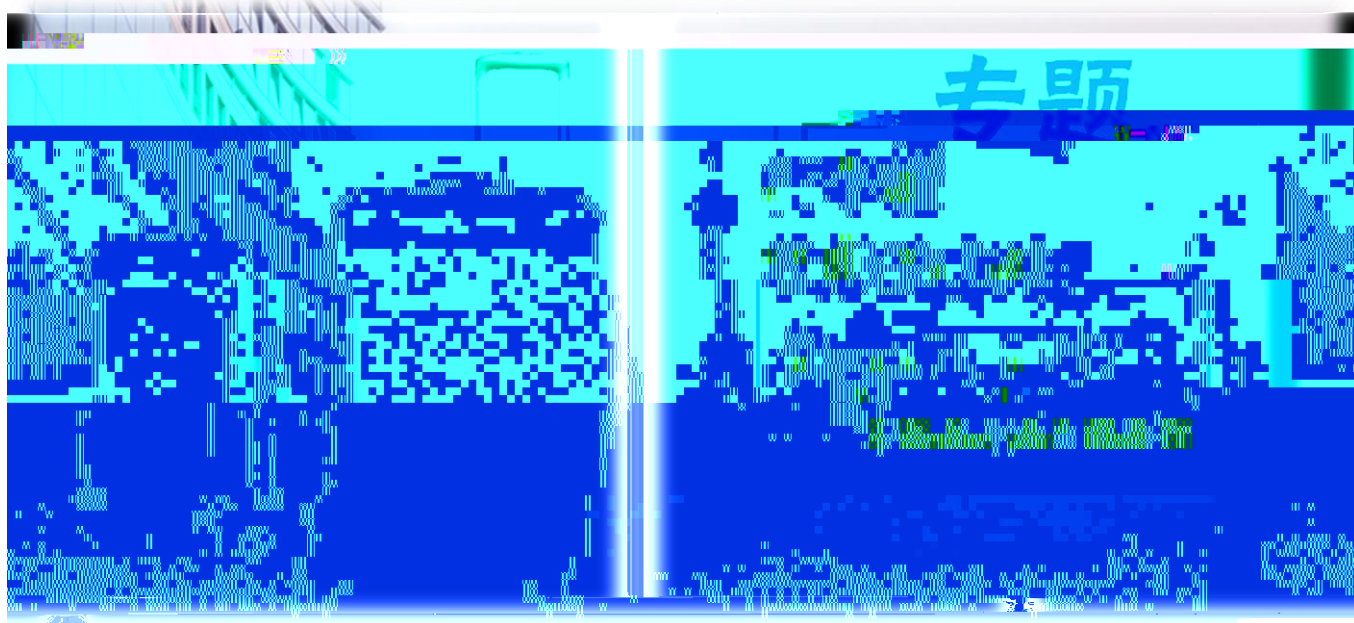
95

2016

2016

7 20





/



ABS PP



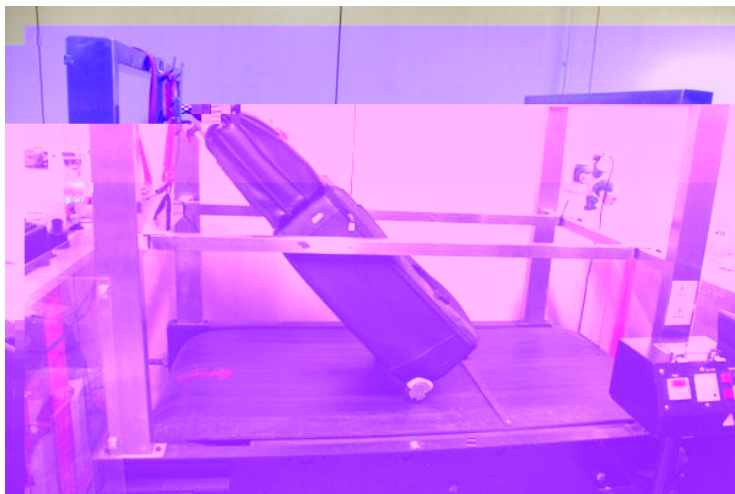
()



()







TSA

TSA

TSA

TSA

TSA



—

20

115cm



标准更新

为你带来全球最新的标准信息



中国 RoHS: 《电器电子产品有害物质限制使用管理办法》于 7 月 1 日正式实施

RoHS

2016 7 1

SJ/T 11364-2014

SJ/T 11364-2014

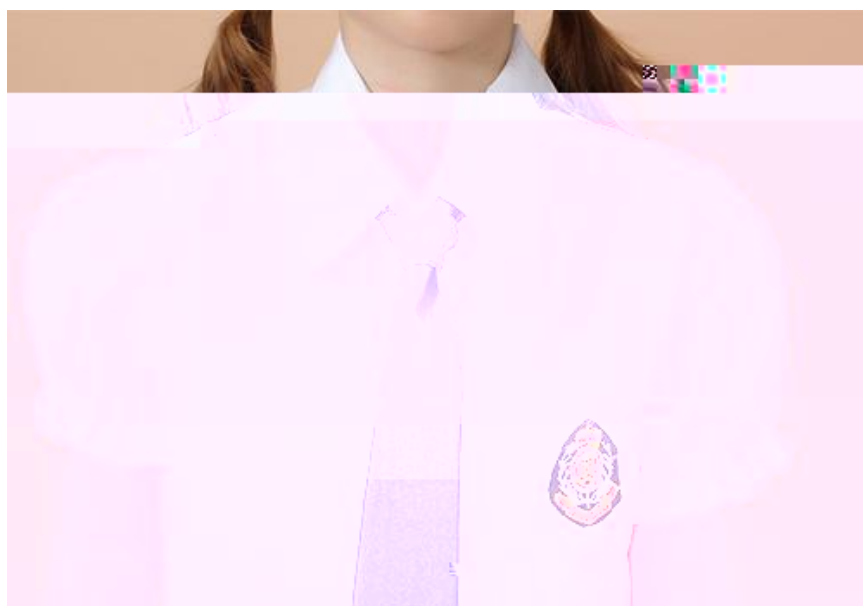
7 1

"

"







" " " " " " " "

2016 7 1

G-mark



2014/53/EU EN 300 220-1/-2

RED 2016. 6. 13



5.5	D-M3
5.6	D-M2, D-M2a, D-M3
5.7	D-M1, D-M2, D-M2a, D-M3
5.8	D-M2, D-M2a, D-M3
5.9	D-M1, D-M2, D-M2a, D-M3
5.10	D-M3
5.11	D-M2, D-M2a, D-M3
5.12	D-M1, D-M2, D-M2a, D-M3
5.14	D-M3
5.15	D-M3
5.16	D-M3
5.17	D-M3
5.18	D-M3
5.19	D-M3
5.20	D-M3
5.21	D-M3

Band AA, Adaptive Power Control ()

Operational Frequency Band	Maximum Effective Radiated Power	Channel access and occupation rules	Additional / other spectrum access parameters	Maximum occupied bandwidth
----------------------------------	---	--	---	----------------------------------

Operational Frequency Band		Maximum Effective Radiated Power	Channel access and occupation rules	Additional / other spectrum access parameters	Maximum occupied bandwidth	Other usage restriction	Notes	CEPT/ERC/REC 70-03 [i.1] implementation status
AB	915 MHz to 915,2 MHz	25 mW e.r.p.	0,1 % duty cycle For ER-GSM protection (918 MHz to 921 MHz, where applicable), the duty cycle is limited to 0.01% and limited to a maximum transmit on-time of 5 ms/1 s	DCT of 0,1 % respecting TXon 200 ms, TXoff 200ms Alternatively DCT of 10s/24h with TXon 800 ms, TXoff 200 ms	200 kHz		See note	20 %
AC	920,8 MHz to 921 MHz	25 mW e.r.p.	0,1 % duty cycle For ER-GSM protection (918 MHz to 921 MHz, where applicable), the duty cycle is limited to 0,01 % and limited to a maximum transmit on		200 kHz		See note	20 %

(a) REACH

2016 6 20
)

(ECHA)

(a)

(SVHC)

(

(SVHC)

169

0.1%

(EEA)

45

0.1 %

(ECHA)

(a)

PAHS

AFPS GS 2014:01 PAK

REACH

(EC) No. 1907/2006

XVII

50

	EC NO.	CAS NO.	
(a) Benzo[a]pyrene	200-028-5	50-32-8	

(a)

()



Densely woven fabrics

Membranes

Coatings

20 80

Qual i tex

Qual i tex

PTFE

PU

BION

AkzoNobel

Sympatex

W. L. Gore

Gore-Tex

Mi crotex



GB4744-84(—)







EMC

EMC EN55032 2017 3 5 EN 55013 ((AV) EMC) EN55022((ITE) EMC

EN55032

EN55013 EN55022

EN55032

EN55032

EN 55032

600V

EN 55013

EN 55022

EN 55032

EN55032 EN55013 EN55022

EN 55013

230V(± 10V)

110V(± 10V)

50Hz

60Hz



7 19

8

GB31241

40

1

2000

80%-90%

9

90.5-98.9

9

EMC

1

IT AV

EMC

2

EMC

EMC

2

EMI EMS

/
/

1

/



1

2

3

/

IT AV

EMC

1

EMC

EMC

2

EMC

EMC

EMC

